



# Welcome to the Solutions Table

Presented to Coastal First Nations Great Bear Initiative

# Past Consultation Practices on Haida Gwaii

---

- ▶ Historically, Province of BC sent letter/application to Council of the Haida Nation (CHN) representatives to facilitate their fiduciary duty of consultation
- ▶ CHN wanted deeper, more meaningful engagement resulting in decisions more inclusive of Haida values



# Past Consultation Practices on Haida Gwaii

---



- ▶ CHN and the Province of BC continue to work towards Reconciliation of interests on Haida Gwaii
- ▶ CHN and District staff implement “pilot project” consultation model...sets the stage for Solutions Table



---

Welcome to the Solutions Table



# Past Consultation Practices on Haida Gwaii

---

- ▶ Through planning, negotiation, the CHN and the Province signed the *Kunst'aa guu Kunst'aayah* (the beginning) Reconciliation Protocol as an important step.



# Context for the Solutions Table

---

- ▶ Kunst'aa guu-Kunst'aayah Reconciliation Protocol and the Solution Table
  - ▶ Signed 2009 by CHN and Province (Schedule B)
  - ▶ Streamlined engagement process: focuses on key lands and resources applications
  - ▶ Forests and Lands applications
  - ▶ 14 Legislative Acts (i.e. *Heritage Conservation Act, Mines Act, Water Act, Wildlife Act...*)
  - ▶ Informed input through briefing notes to respective Haida and BC decision makers



---

Welcome to the Solutions Table



# Solutions Table Process Overview

---

- ▶ Solutions Table Terms of Reference
- ▶ Streamlined Process (Scenario 1 vs. Scenario 2)
- ▶ Stage 4 Senior Representative Discussion
- ▶ Solutions Table Briefing Note



---

Welcome to the Solutions Table



# Solutions Table Terms of Reference

---

## ▶ From TOR:

- ▶ “The scope of the Solutions Table’s work will be the review of all operational and administrative applications set out in Attachment A of *The Streamlined Process for the Review of Applications*”
- ▶ “Best efforts will be made within the agreed timelines by the Solutions Table members to come to consensus before providing information to the decision maker of each Party.”





# Streamlined Process

---

- ▶ Tool designed for the Solutions Table to increase efficiency of application process
- ▶ Applications sorted into Scenario 1 or Scenario 2
  - ▶ Scenario 1: confirmed by ST Co-Chairs and then directly to Decision Makers
  - ▶ Target timeframe: 1-14 calendar days
  - ▶ Scenario 2: confirmed by ST Co-Chairs then forwarded to ST for discussion. Informed input (via Briefing Note) sent to Decision Makers.
  - ▶ Target timeframe: 1-60 calendar days





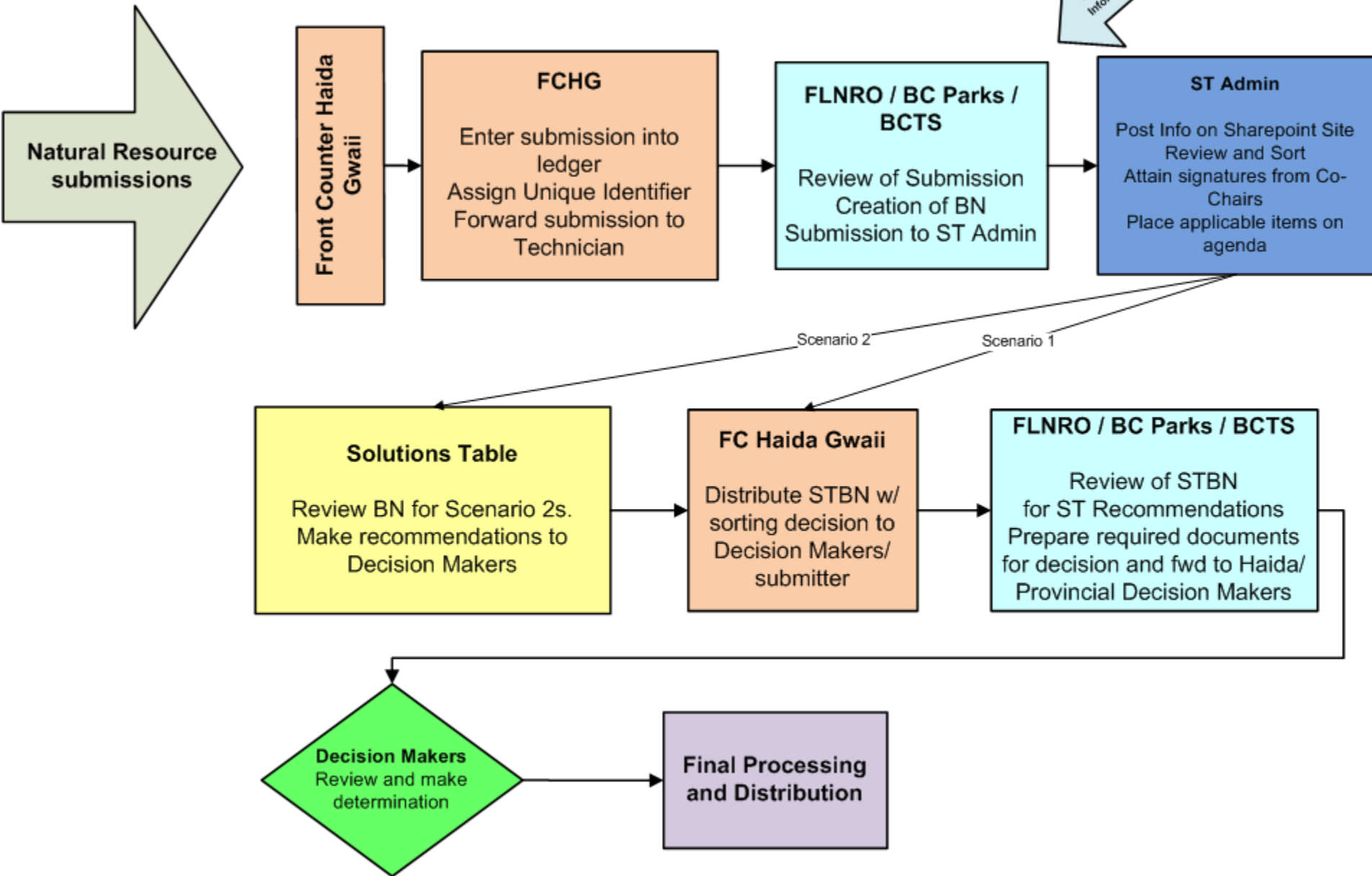
# Stage 4 Senior Representative Discussion

---

- ▶ Results when ST cannot reach consensus on an application
- ▶ Agreement allows for a target timeframe of 20 days to complete this step
- ▶ To date, 5.7% of applications have reached this stage



# Haida Gwaii Natural Resource Submissions



# Relationships don't live on paper

---

- ▶ Formal agreements are just the beginning:
  - ▶ Agreements are made Government to Government
  - ▶ Weekly meeting is face to face and each application has person-to-person discussion
  - ▶ Interpersonal relationships are key to getting through the tough times!



---

Welcome to the Solutions Table



# Process brings certainty...

---



- ▶ Natural resource decisions more reflective of Haida values
- ▶ Certainty to economy on island; average 16 day turnaround on most application types



# Streamlined Process – Attachment A

---

- ▶ Provides “sorting” matrix defining all Scenario 1 and 2 application types
- ▶ Covers several different legislative acts
- ▶ Available at:
  - ▶ <https://spc-ilmb.gov.bc.ca/WG/FNCCT/WC/default.aspx>



**Table 1. Non Spatial Criteria by permit type for applicable legislation**

Application Type	Sub-type	Considerations	Scenario 1	Scenario 2
<b>Forest Act and Forest and Range Practices Act</b>				
Free Use Permit (FUP)	Firewood Christmas tree		X	

<b>Special Use Permit (SUP)</b>  (a) construction and maintenance of a road, including construction and maintenance of bridges and other drainage structures; (b) sand pits, gravel pits, rock quarries and other quarries that provide materials for road construction, modification or maintenance authorized under the Forest Act; (c) a communications site; (d) a logging camp and associated facilities, including a waste disposal site; (e) a log dump or dry land sort; (f) a temporary timber processing site; (g) a lookout; (h) a weather station; (i) an airstrip, helipad or other air transportation landing site; (j) educational or research purposes; (k) weigh scales; (l) sequestration of carbon	New authorization			X
	Renewals <sup>1</sup>	1. No modifications-renewal of existing authorization.	X	
		2. If the area has been heavily impacted in the past and no new features have been identified.	X	

# Solutions Table Briefing Note

---

- ▶ Method for submitting info to the Solutions Table
- ▶ Documents sorting decision
- ▶ Summary of items of Solutions Table concern
- ▶ Records discussion between proponent, technical support, and the Solutions Table
- ▶ Serves as Consultation Record for Decision Makers



---

Welcome to the Solutions Table





# Solutions Table Briefing Notes

## ► Review of past example of Sorting Form and STBN



Solutions Table Briefing Note  
Haida Gwaii Natural Resource District  
One Team, One Window, One Process.  
Two Governments



Unique Identifier:	Taan TFL60 R13350 TOW001 TOW002 8-Jan-15
Submitted for sorting:	January 23, 2015
Decision Makers:	CHR, Province
Prepared by:	Shelagh Farrell
Suggested Scenario	2 – due to building road through Arch Site and Riparian Management Area (RMA), and, Visual Impact for both blocks, and, amount of cultural features in the vicinity.

### Sorting

Comments	Scenario
Haida Co-chair agrees with scenario 2	2

**Application Summary:** Taan is applying to place 1 road under their TFL60 road permit R13350 to access blocks TOW001 and TOW002 within their TFL operating area.

Total amount of new road construction: 1+793m.  
Other roads accessing the blocks will be authorized for harvest under the CP, because these roads are wholly within the block boundaries.

#### Background:

An IGP has been completed for the access road DAT7000, which accesses both blocks, due to the road being within the LUO Reserve and Management Zone of CMTs 100, 101 and 102. This IGP was signed off on November 14, 2014. The IGP commented that no industrial activities are to take place prior to receiving a Site Alteration Permit (SAP) and that there are no issues with the information provided.

As per this RP amendment application letter; "At the time of this submission the Site Alteration Permit from Arch Branch to construct the road within the reserve of CMTs 100 and 101 has not been received but is expected by January 21, 2015. This Road Permit Amendment application is being put forward to Ministry and the Solutions Table now in anticipation of the permit being received within the next two to three weeks."

A Visual Impact Assessment has been completed for TOW001 and TOW002. TOW002 is not visible from any of the Viewpoints. TOW001 is 0.3% of the visible sightline at Viewpoint #293, and 0.8% of the visible sightline at Viewpoint #297. These percentages are below the allowable visual impact for these Viewpoints.

**TOW001:** consists of 1 harvest polygon.

WTRA is located along the south east boundary between FC12 and FC16 with an area of 3.1ha. LUO Reserves are located surrounding each CMT and adjacent to wetlands and Type I and Type II streams. LUO Reserve area is 9.6ha.

LUO Management Zones are located surrounding the CMT LUO Reserves to further protect these features, and, along the LUO Reserves of the streams. Total area is 5.2ha.

Tree Crown Modification has been prescribed for the entire northwest boundary of the block with a length of 1+942m and a width of 20m.

Sensitive Soils have been identified in 8 locations throughout the block, specifically surrounding the Non-Classified Drainages within the block.

Unique Identifier: Taan TFL60 R13350 TOW001 TOW002 8-Jan-15 Page 1 of 7



Welcome to the Solutions Table



---

# Questions?



---

Welcome to the Solutions Table



# How'aa/Thank You!

---

## ▶ Contacts for Solutions Table:

- ▶ Solutions Table Co-Chairs: [colin.richardson@haidanation.com](mailto:colin.richardson@haidanation.com),  
[tyler.peet@gov.bc.ca](mailto:tyler.peet@gov.bc.ca)
- ▶ For general questions: Front Counter Haida Gwaii staff: 250-559-6200 or  
[frontcounterhaidagwaii@gov.bc.ca](mailto:frontcounterhaidagwaii@gov.bc.ca)

## ▶ Information re: Solutions Table

- ▶ Solutions Table Reference Documents (Reconciliation Protocol, Attachment A, etc.)  
<https://spc-ilmb.gov.bc.ca/WG/FNCCT/WC/default.aspx>



---

Welcome to the Solutions Table

